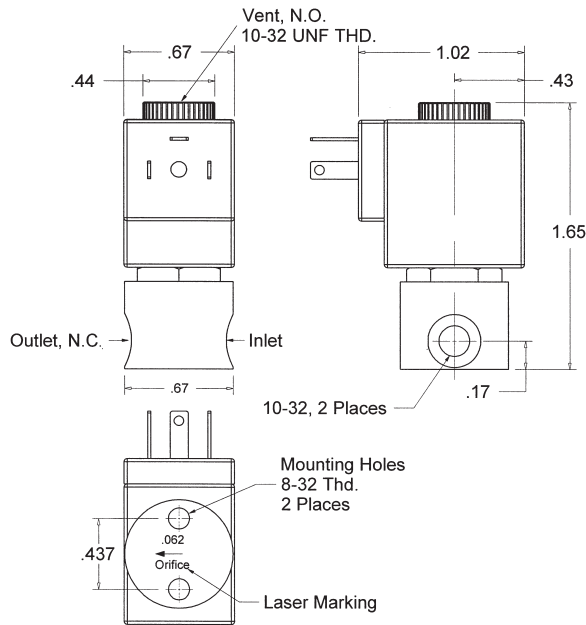


# MICRO SOLENOID VALVES

## 3/2 - SOLENOID VALVE - Normally Closed (N.C.) - 10-32



### GENERAL FEATURES

Direct acting solenoid valve. Suitable to shut off liquid and gaseous fluids. Material compatibility is application dependent and should be verified with testing. Applications include: plumbing, medical/dental, beverage, steam.

### TECHNICAL FEATURES

Opening time ~ 5 to 15ms  
 Closing time ~ 5 to 15ms  
 Fluid Temperature -30°C to 130°C (-22°F to 266°F)

### MATERIALS IN CONTACT WITH FLUID\*

Body	Nickel plated brass
Seal	Viton or Buna
Seat	Nickel plated brass
Internal components	Stainless steel
Guide assembly	Nickel plated brass
Shading ring	Copper

### COIL

Duty	100% (continuous operation)
Impregnation	30% glass filled polyester
Encapsulation material	Glass filled nylon
Insulation Class	Class H (200°C) per IEC 317-8
Ambient temperature	-30°C to 70°C (-22°F to 158°F)
Electrical connections	DIN 43650 C
Voltages	DC 6, 12 or 24 V
	AC 24V/60Hz

\*Special materials available upon request.

Port	Valve	Orifice Size (in)	Cv	P Min (PSI)	Max. Operating PD (PSI)				Power Absorption			Seals	Weight (oz)
					Gases		Liquids		AC (VA)		DC (W)		
					AC	DC	AC	DC	Inrush	Holding			
10-32	FB301V062A	0.062	0.082	0	150	150	150	150	4	3	2.4	Viton	2.1
10-32	FB301V044A	0.044	0.041	0	150	150	150	150	4	3	2.4	Viton	2.1
10-32	FB301B062A	0.062	0.082	0	150	150	150	150	4	3	2.4	Buna	2.1
10-32	FB301B044A	0.044	0.041	0	150	150	150	150	4	3	2.4	Buna	2.1

## Sealing and Flow Control Solutions



7 Orchard Park Road, Madison, CT 06443 USA  
 Tel: +1 (203) 245-1100 Fax: +1 (203) 245-3072  
 sales@farmingtoneng.com

www.farmingtoneng.com

